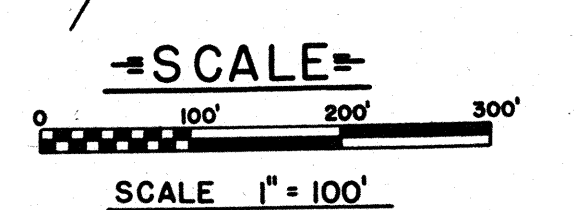
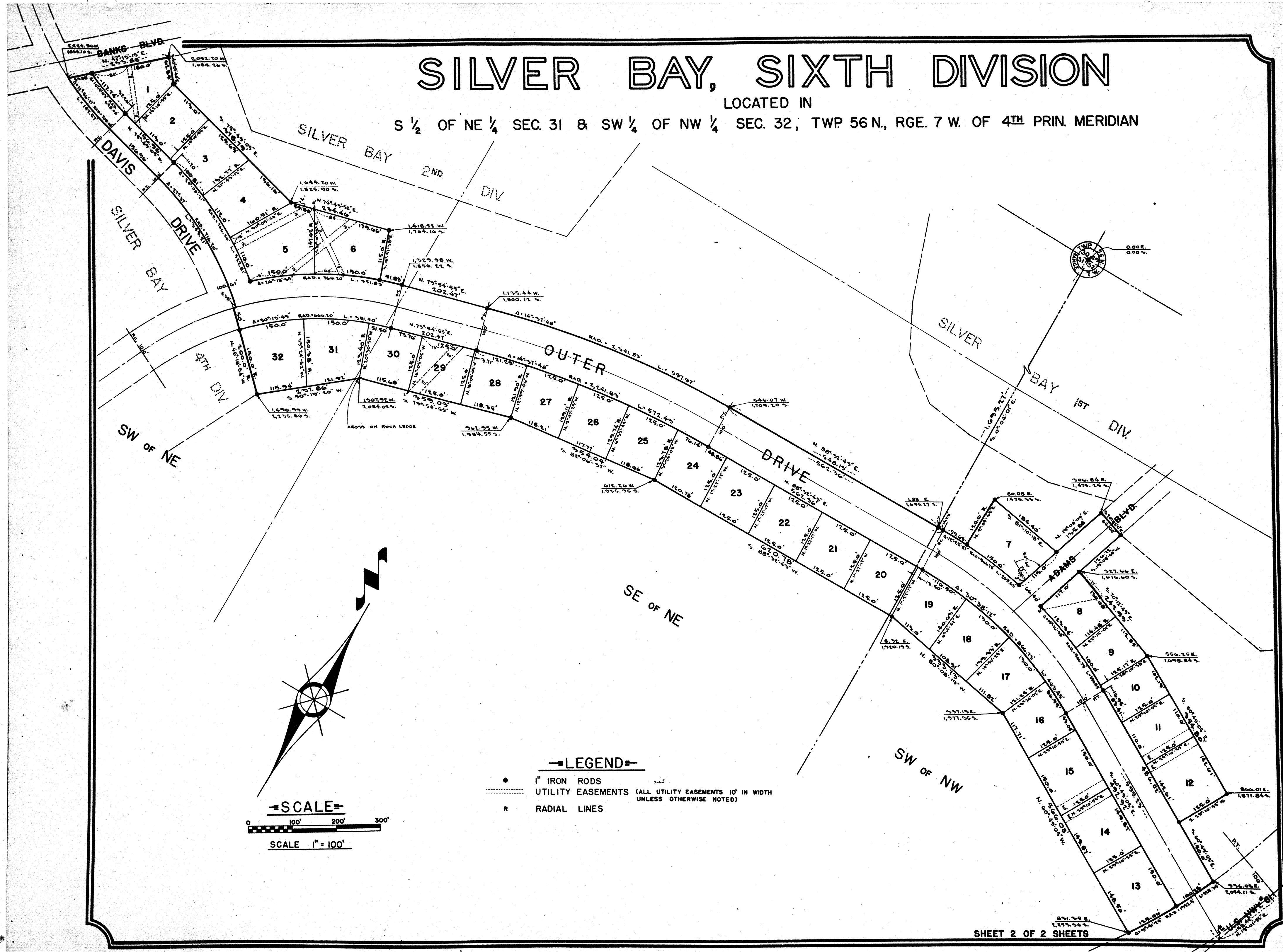


SILVER BAY, SIXTH DIVISION

LOCATED IN

S 1/2 OF NE 1/4 SEC. 31 & SW 1/4 OF NW 1/4 SEC. 32, TWP. 56 N., RGE. 7 W. OF 4TH PRIN. MERIDIAN



—LEGEND—

- 1" IRON RODS
- UTILITY EASEMENTS (ALL UTILITY EASEMENTS 10' IN WIDTH UNLESS OTHERWISE NOTED)
- R RADIAL LINES